

## Primary PE

2018 - 2019

### PE Spending for Monkseaton Middle School.

The Primary PE funding is money each school which is centrally allocated to spend on staff training and CPD; providing supply teachers to cover PE staff for training purposes, increasing the competitive sports opportunities within school; and observing and monitoring PE and its assessment across the school.

The government believes that the PE funding should be used to: promote healthy lifestyles including participation in sport and addressing obesity; improve quality of PE and sport for all children increase competitive sporting opportunities for all children.

At Monkseaton Middle School, we provide the required 2 hours of high quality Physical Education per week to all pupils in KS2 as well as a wide range of extra-curricular activities offering students the opportunity to be involved in a wide variety of sport, both at the recreational and competitive level.

All students in Year 5 are provided with swimming lessons, taught by specialist coaches.

### SWIMMING AT MMS

From 2018 – 2019, there is an additional requirement for schools to report on swimming competency in KS2: schools are required to publish how many students within Year 6 are meeting the national curriculum requirement to swim competently, confidently and proficiently over a distance of at least 25m and use a range of strokes effectively and perform safe self-rescue in different water based situations.

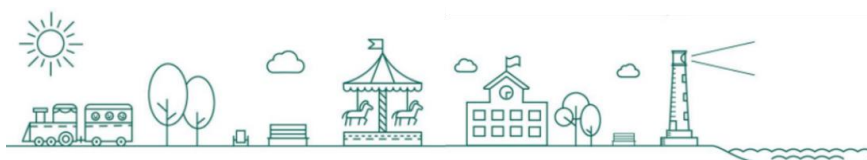
Swimming Data for 2018/2019 Year 6 Pupils:

Total number of students in Y6 2018 – 2019 (Current Year 7) = 77

Percentage of students who could swim 25m+ = 76%

Percentage of students who could not swim 25m = 24%

18 pupils did not achieve 25m+ swimming.



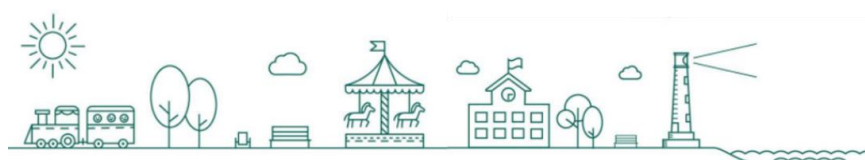
## PE Funding for Monkseaton Middle School for 2018-2019

**Total Allocation:** £17,500

This figure is estimated from Government guidance released 31/10/18 and is calculated using the formula provided.

**2018 – 2019 school year predicted spend** £16,556

2018/2019 School Year		
Support Provided	Cost	Impact
<b>CPD For Teaching and Support staff in school</b>		
North Tyneside Primary PE meetings	£450	Cost of Supply for Head of Department to attend North Tyneside Primary PE meetings throughout the year and Active Schools Training delivered by the Youth Sports trust.
Dance CPD with LP Dance to assist in the delivery of new schemes of work.	£180	CPD support for the subject lead to develop their Dance subject knowledge. This will improve the quality of Dance taught within school.
<b>Total</b>	£630	
Support Provided	Cost	Impact
<b>Extra-Curricular Activities</b>		
Access Coaching	£900.00	£30 per session x 30 sessions allowing KS2 pupils to access Sporting Activities after school. Attendance to clubs has been very positive so far this year and a continued and popular activity for pupils.
Dance with LP Dance	£1,225.00	£35 per session - 35 weeks of Extra Curricular Dance with LP Dance. Allowing KS2 pupils to access high quality Dance tuition. 25 pupils will also represent the school in the Whitley Bay dance festival. The club remains a firm Friday night favourite with pupils.
Judo	£1040.00	2 x 6 week blocks of After School Judo coaching, 52 KS2 pupils to have access to high quality Judo coaching.



Skipping School	£500.00	Increased participation from students who are reluctant to engage in more traditional activities. This includes all Year 5 pupils receiving 1 hour of skipping training, 4 hours continued Skipping Squad Selection and the Final Skipping Festival, which will include 30 pupils skipping at a local festival. Skipping is becoming more embedded in break and lunch time activities, highlighting Skipping as a popular exercise for pupils to increase their activity levels during the school day.
Total	£3,665.00	
<b>Transport to events during the 2018/2019 school year</b>		
Transport to sporting events during the 2018/2019 school year	£500.00	To allow pupils have access to the following activities: Sports Hall Athletics, Skipping Schools Festival, football, athletics etc.
Transport to Activity Day at the Parks x 2	£700.00	Transport to Activities Day at the Parks for KS2.
High Borrans Transport	£850.00	Transport costs to High Borrans covered in order to reduce the overall cost of the trip to parents and carers. 40 Year 6 pupils all took part in a fantastic week of outdoor learning attended the trip.
Total	£2,050.00	
<b>Equipment to support curriculum and extra-curricular activities</b>		
IPads and Cases	£2,304.00	IPads to improve the quality of self, peer and teacher assessment within PE. Developing the use of Seesaw as a tool for recording evidence of learning and self and peer assessment.
Seesaw Licence for whole school use.	£90.00	Access to the whole school licence of Seesaw.
Additional Swimming	£1,000.00	Additional Swimming lessons for pupils in Year 6 who cannot yet swim 25m.
Total	£3,394.00	
<b>Support Provided</b>	<b>Cost</b>	<b>Impact</b>
<b>Additional Enrichment days</b>		
WoW Dance Days	£580.00	LP Dance to offer a whole day of Dance to Year 5 and 6 Pupils
End of Year Activity Day	£892.00	KS 2 End of Year Activity days, which offer the opportunities to do sports that we do not offer within our school curriculum.



Natta-Lingo days x 2	£500.00	Visit from Natta Lingo, using Sport to develop pupils French language skills.
Access Coaching Activity Days	£720.00	KS2 Pupils received the opportunity to take part in a range of sporting activities not always offered on our curriculum. As a result of this, every child in KS2 received additional coaching for activities such as, Archery, Rocket ball, Touckball and Ultimate Frisbee
Additional Outdoor Education Activities.	£1600.00	To offer year 6 pupils to access additional Outdoor Adventurous Activities on top of what is already offered within the curriculum.
Sporting activities for those who don't attend High Borrans	£1500.00	Sporting and Outdoor Adventurous Activities for pupils who are not going to High Borrans.
<b>Total</b>	<b>£5792.00</b>	
<b>Supply costs to cover teacher of PE</b>		
Supply cover costs for High Borrans week	£850.00	Cost of supply for head of department to attend the High Borrans Outdoor Education week with 40 Year 6 pupils. By covering the PE teachers time table with a PE specialist, pupils who are left in school doing the High Borrans week, will continue to receive high quality PE as part of their education.
<b>Total predicted spending for the 2018/2019 school year.</b>		
Totals 2018/2019	£16,381.00	Total money spent on improving the quality of Physical Education provision within Monkseaton Middle School during the School Year of 2018/2019 and providing a sustainable legacy for future years.

The sustainability of the impact of the Primary PE funding will be maintained by adaptations to the curriculum to include 'alternative' sports experienced through the additional programmes, in addition to monitoring the continued involvement of students in extra-curricular activities.

